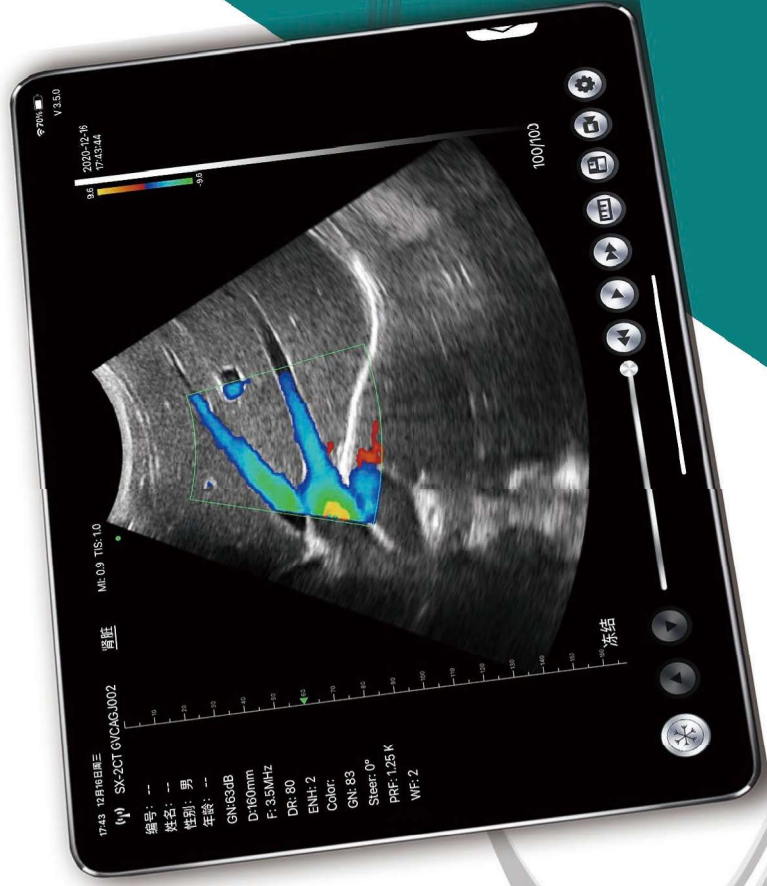




C10QT Double Head

Convex probe + Trans-vaginal Probe
Wireless Color Doppler Ultrasonic

KONTED
www.konted.cn



MPaHS
Medical Provisions
and Health Services

MPaHS Srl
Via delle Cappuccine 3/1 - 16128 Genova
T. 010 8939950 - F. +39 010 8935891
E-mail: info@mpahs.com - www.mpahs.com



ANDROID APP ON
Google play

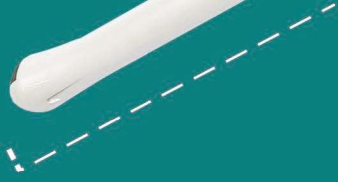
Download on the
App Store

Care for maternal and child health

A portable and affordable ultrasound machine. With the use of a chip, a double head probe, a built-in WiFi signal, a lithium battery and an iPhone/ipad/Android devices, now you can have an ultrasound anywhere, anytime.



trans-vaginal probe



convex probe



347mm

N.W: 304g



Advantages

- Whole waterproof design, convenient for sterilization in the operating field.
- Support IOS/Android/Windows device
- Built-in WiFi and Lithium Battery, support wireless charging,
- Save more time and costs for doctors and patients

Specifications

Scanning mode: Electronic array

Channel: 64

Probe element: 192

Probe scan frequency/depth/radius:

convex probe: 3.5/5Mhz, 90/160/220/305mm, R60

trans-vaginal probe: 6.5/8Mhz, 40/60/80/100mm, R10

Display mode:

B, B/M, Color, PW, PDI

Applications:

Abdomen, Gynecology, Obstetric, Cardiac, Urology, Kidney, Lung

Measure:

B: Length, Area/Circumference, Angle, Trace, Distance

GA(CRL, BPD, GS, FL, HC, AC), EFW(BPD, FL)

B+M: Heart Rate, Time, Distance

B+PW: Velocity, Heart Rate(2), S/D, Depth

Image frame rate: 24/s

Cineplay: 100/200/500/1000

Image save: jpg, avi, Mp4 and DICOM format

Wifi type: 802.11g/20MHz/5G/450Mbps

Working system: Apple iOS and Android, Windows

Language: English, Russian, Italian, Spanish, Chinese, Portuguese(Brazil)

Battery: built-in 4200mAh Lithium battery

Power: consumption 4W (probe run) /1.5W (probe stop)

Battery Replaceable: Yes

Battery last: 3 hours(working time), More than 5 hours(stand by time)

Battery charge: by wireless charge

Dimension: 347x85x30mm

Probe head width: 80mm

Weight: 304g

Fetal image



Items List for C10QT Scanner

Standard Accessories:

Wireless Ultrasound Probe*1

Portable Wireless Charger*1

USB Cable for Charging*1

Operators' Manual*1

Optional:

Bluetooth printer

Biopsy needle guide

ipad Trolley

